



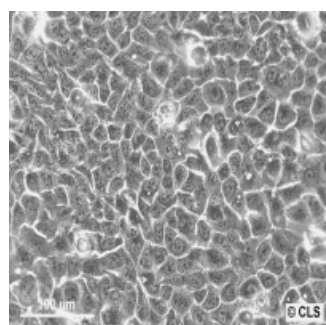
DMEM

Catalog Number: 820300 / 820300a

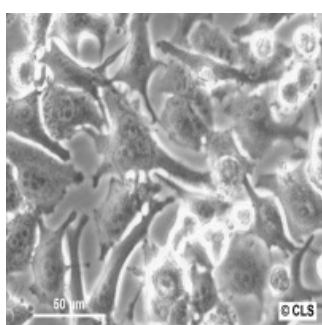
Size: 500 ml

DMEM (Dulbecco's Modified Eagle's Medium) contains four-fold concentrations of the amino acids and vitamins as present in BME (Basal Medium Eagle). This culture medium, enriched with 4.5 g/L glucose, supports the proliferation of a wide variety of normal and transformed cells, such as primary cultures of mouse and chicken cells growing adherently.

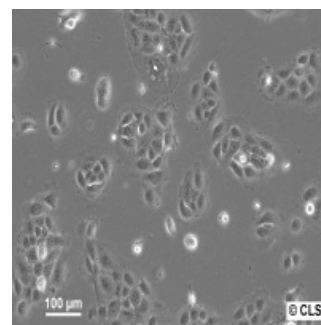
Cell lines cultured using DMEM



HaCaT



IGR-1



HNO223

Ordering Information

Cat-No.	Designation	Size
820300	DMEM, supplemented with 4.5 g/L glucose, L-glutamine and 10% FBS Stable for about 6 weeks from date of manufacture as indicated on the label.	500 mL
820300a	DMEM, supplemented with 4.5 g/L glucose and L-glutamine.	500 mL

The Buffering capacity ranges from pH = 7.2 to 7.6.

Each lot of DMEM (CLS designation MG-30 has been tested for sterility and absence of Mycoplasma and Bacteria. The manufacturing process and documentation are performed according to ISO9001:2008 based on GLP under strict quality control.



Maintenance

- Keep refrigerated at +2°C to +8°C in the dark. Freezing as well as warming up to +37°C minimize the quality of the product.
- Do not heat the medium to more than 37°C or use uncontrollable sources of heat (e.g. microwave appliances).
- If only a part of the medium is to be used, remove this amount from the bottle and warm it up inside a separate device.

Concentration	mg/L
<u>Inorganic salts</u>	
CaCl ₂	200.00
Fe(NO ₃) ₃ · 9H ₂ O	0.1
KCl	400.00
MgSO ₄ (anhydrous)	97.70
NaCl	6,400.00
NaHCO ₃	3,700.00
NaH ₂ PO ₄ · H ₂ O	125.00
<u>Amino acids</u>	
L-Arginine · HCl	84.00
L-Cystine · 2HCl	62.57
L-Glutamine	584.00
Glycine	30.00
L-Histidine · HCl · H ₂ O	42.00
L-Isoleucine	104.80
L-Leucine	104.80
L-Lysine · HCl	146.20
L-Methionine	30.00
L-Phenylalanine	66.00
L-Serine	42.00
L-Threonine	95.20
L-Tryptophane	16.00
L-Tyrosine · 2Na · 2 H ₂ O	103.79
L-Valine	94.00
<u>Vitamins</u>	
D-Calcium pantothenate (Vitamin B5)	4.00
Choline chloride	4.00
Folic acid	4.00
i-Inositol	7.20
Nicotinamide	4.00
Pyridoxine · HCl (Vitamin B6)	4.00
Riboflavin (Vitamin B2)	0.40
Thiamine · HCl (Vitamin B1)	4.00
<u>Other components</u>	
D(+)-Glucose	4,500.00
Phenol Red · Na	15.00

Note regarding Cat.-No. 820300:
During the supplementation with 10% FBS, 50ml of the basic medium are replaced by the serum. Thus, the concentrations of the ingredients must be adjusted.

Disclaimer
This product is for in-vitro use only.
Not intended for clinical or diagnostic applications.